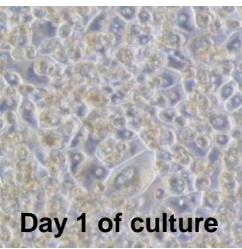
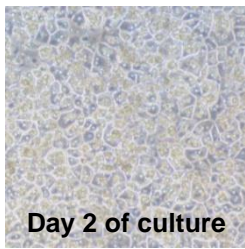


## Morphology

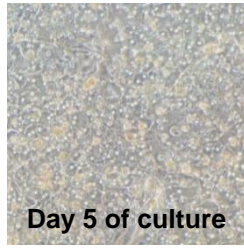
PlatedHeps can be cultured as monolayers over **14 days**



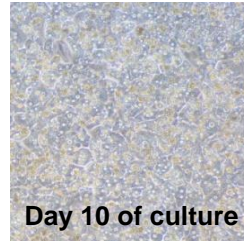
Day 1 of culture



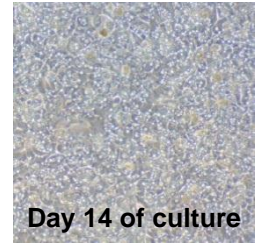
Day 2 of culture



Day 5 of culture



Day 10 of culture

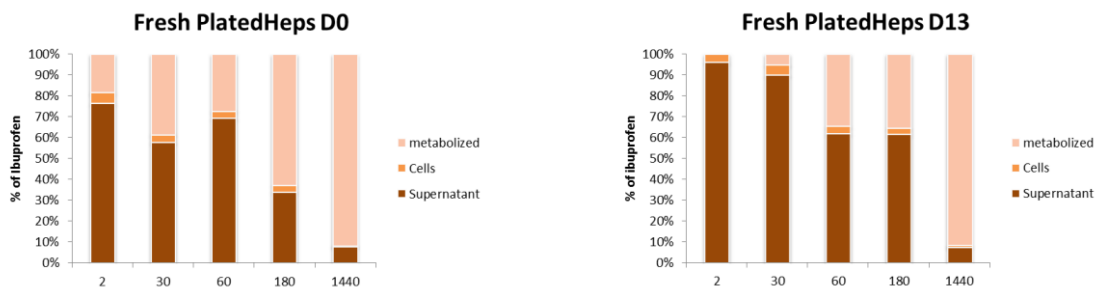


Day 14 of culture

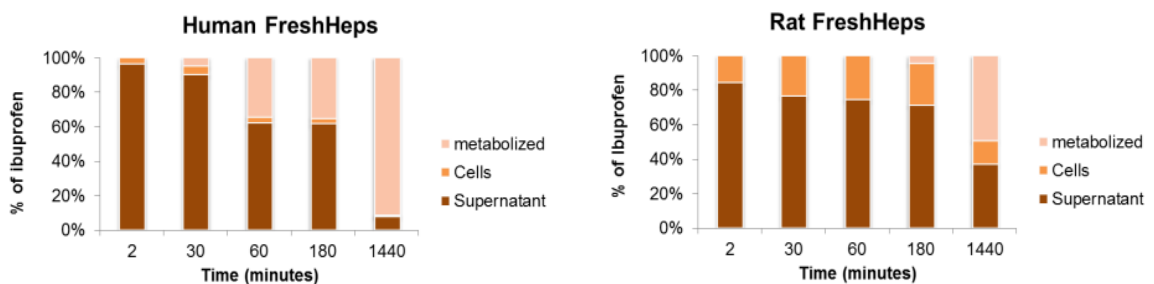
Lecluse and Alexandre, MIMB 2010

## Evaluation of Repeat Drug Exposure

PlatedHeps allow the evaluation of chronic exposure to drugs



PlatedHeps allow the evaluation of **Species-differences** in Drug exposure and metabolism

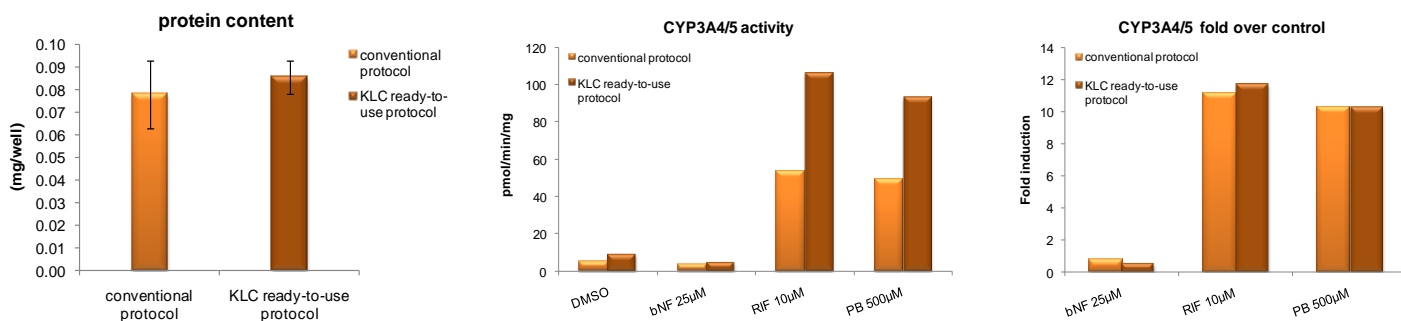


Parmentier et al., ISSX 2012



## CYP induction studies can be started after 72h of culture

PlatedHeps cultured in KLC maintenance medium (KLC-IM)



Alexandre et al., Xenobiotica 2012

